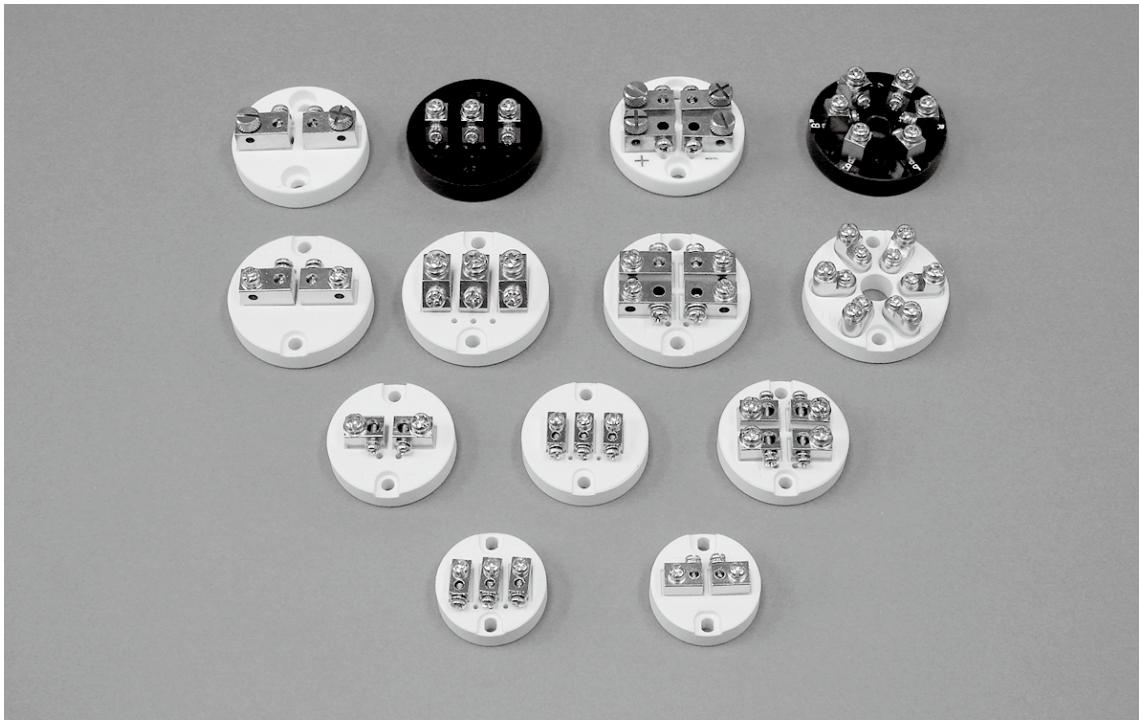
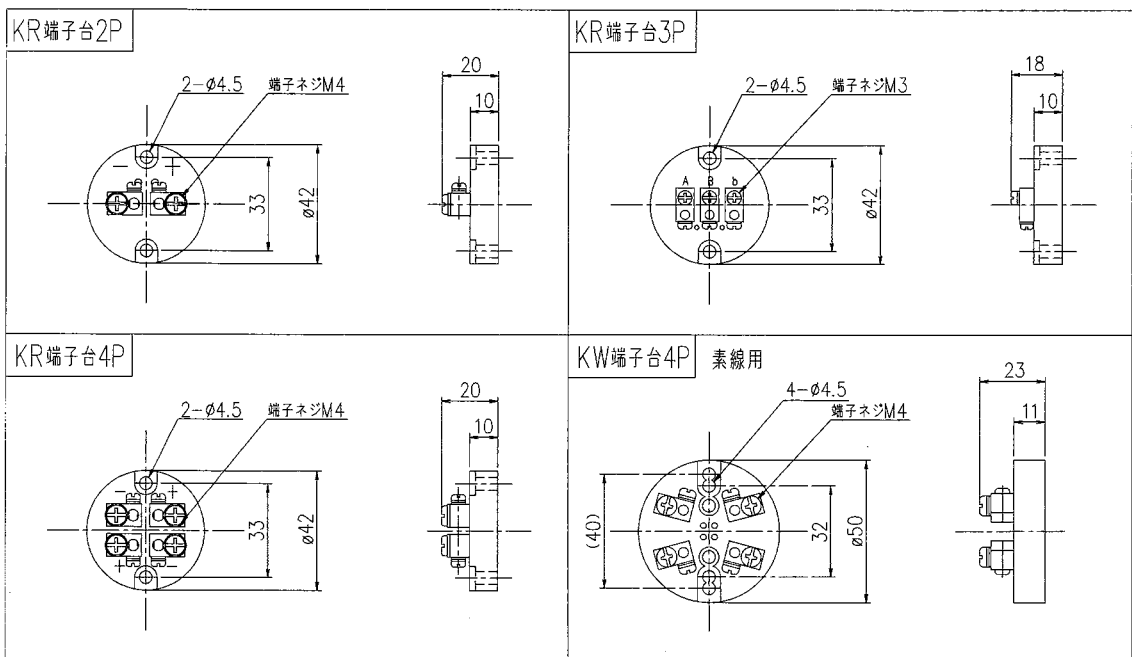


センサー用端子板



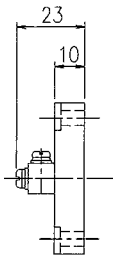
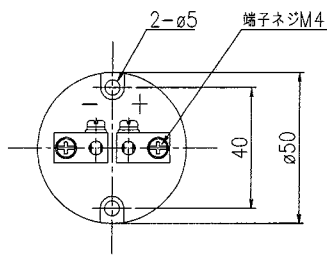
■特長

端子板はセンサー用端子箱内部に入れるもので、材質はステアタイトとベークライトがありますが、通常はステアタイトでできています。ターミナルの取付けビスは真ちゅう材で、そのネジをゆるめることにより簡単にリード部を取外すことができます。

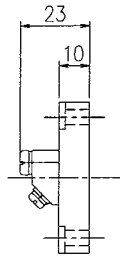
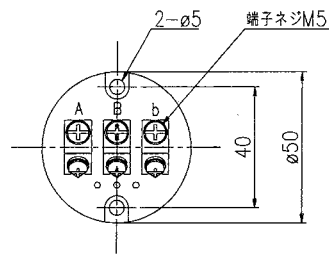


センサー用端子板

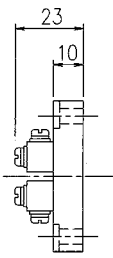
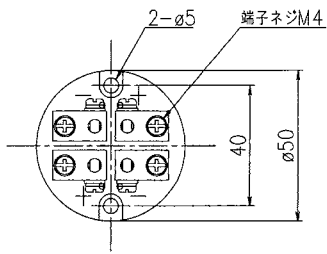
KT端子台2P



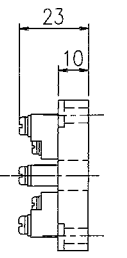
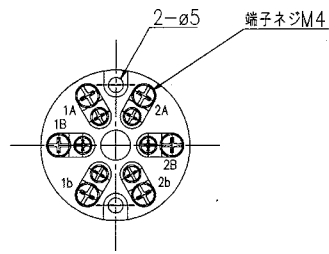
KT端子台3P



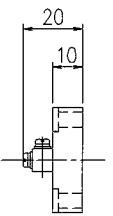
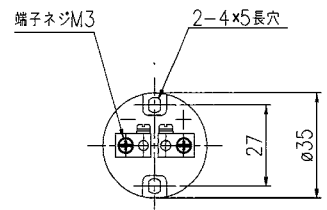
KT端子台4P



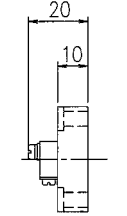
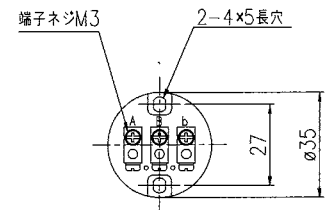
KT端子台6P



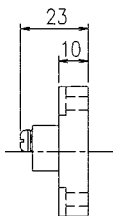
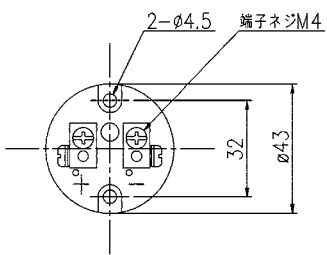
KV端子台2P



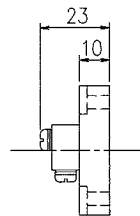
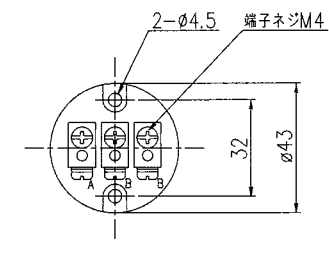
KV端子台3P



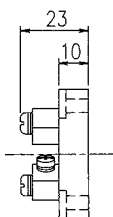
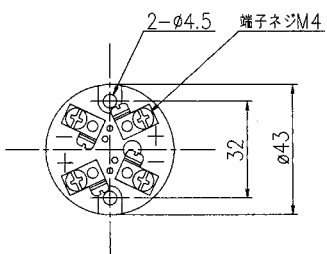
KW端子台2P



KW端子台3P



KW端子台4P シース用



KW端子台6P

